

## Specification Sheets for Wall Storage

### SPECIFICATION VARIANCES

Dimensions on finished cabinets may vary slightly from those shown on these specification sheets due to variability in construction materials.

Our products are engineered to maintain close dimensional tolerances but variability in manufacturing materials can change dimensions slightly (normally within  $\pm 1/8$ " but occasionally up to  $\pm 3/16$ ").

In most applications these slight variations will have no impact upon installation, appearance or function. However, when planning and finishing a space for a built in vanity, **do not frame or finish the space before measuring the actual cabinets in your ensemble!**

We can not be responsible for any expenses incurred as a result of the end user or contractor not following this guideline.



### 24" Contemporary Overjohn

23 7/8" wide

26" tall

9 1/2" front-to-back

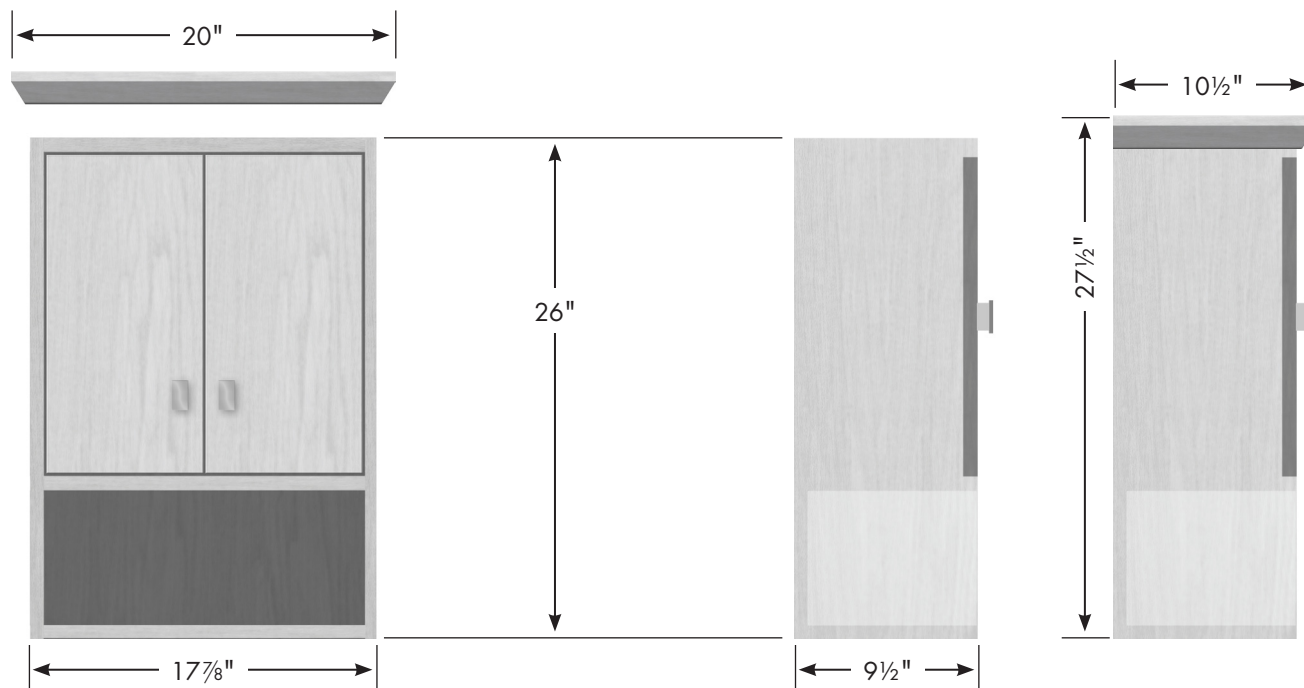
*with optional crown:*

26" wide, 27 1/2" tall, 10 1/2" front-to-back



⇐ *with optional crown*

2



### 18" Contemporary Overjohn

17<sup>7</sup>/<sub>8</sub>" wide

26" tall

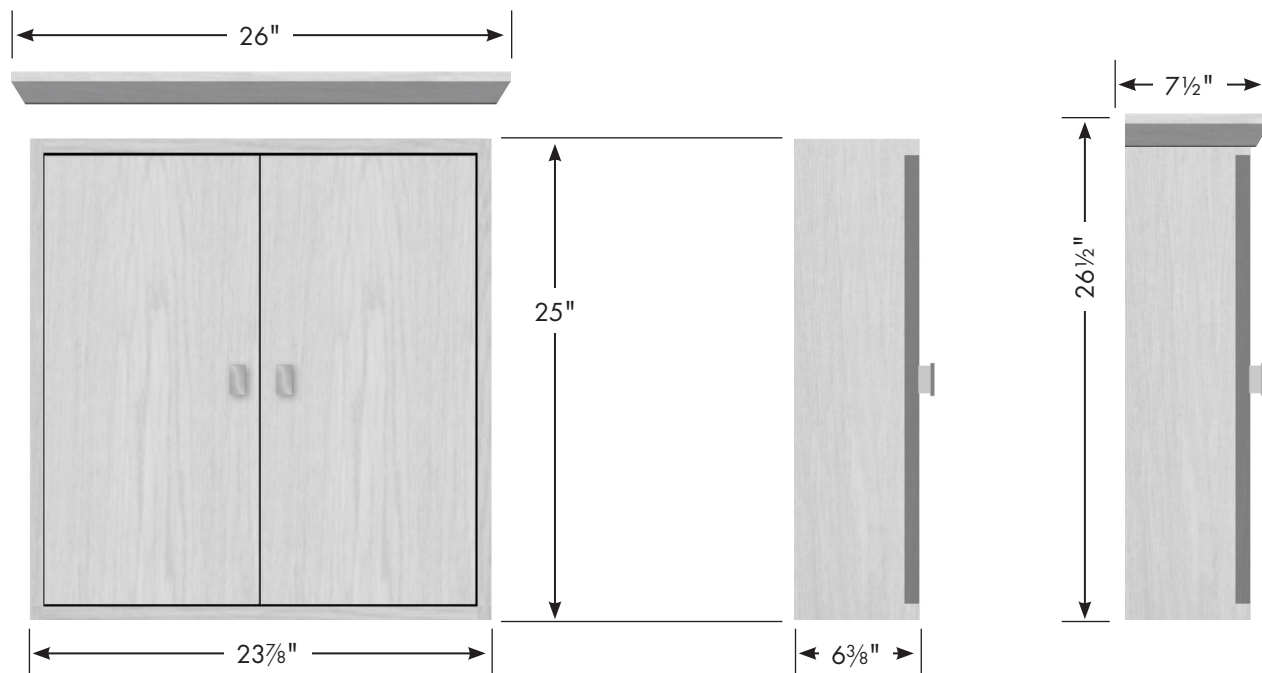
9<sup>1</sup>/<sub>2</sub>" front-to-back

*with optional crown:*

20" wide, 27<sup>1</sup>/<sub>2</sub>" tall, 10<sup>1</sup>/<sub>2</sub>" front-to-back



← *with optional crown*



### 24" Contemporary Cubby

23<sup>7</sup>/<sub>8</sub>" wide

25" tall

6<sup>3</sup>/<sub>8</sub>" front-to-back

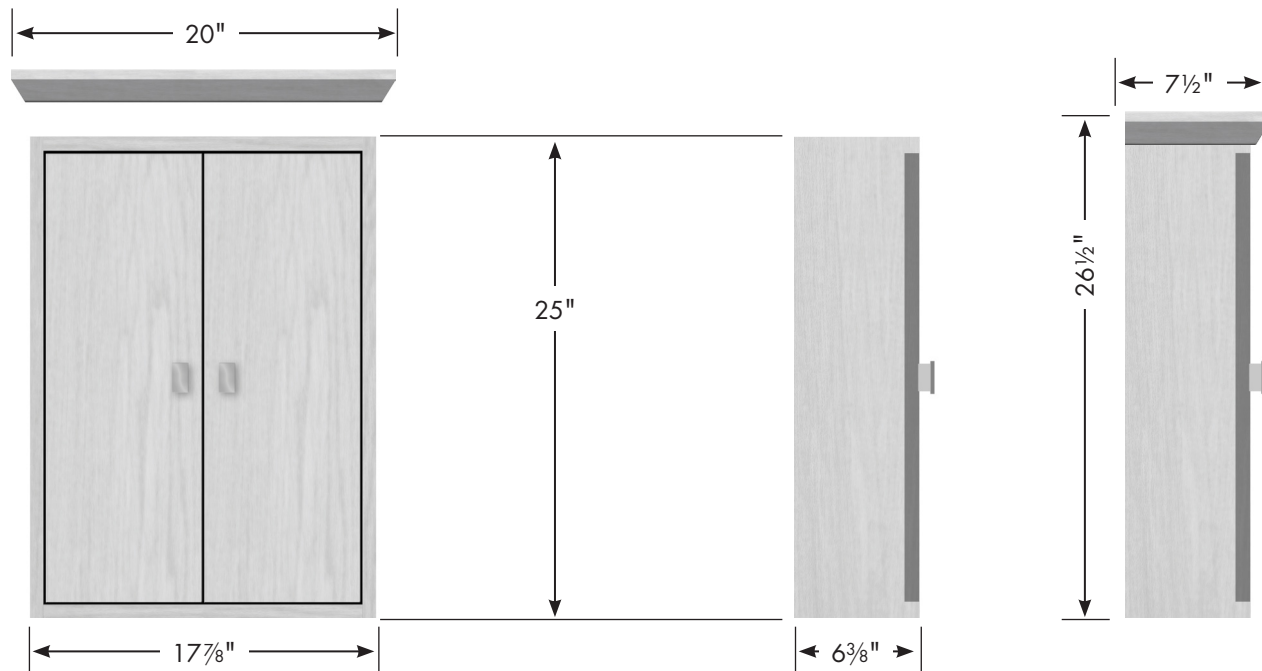
*with optional crown:*

26" wide, 26<sup>1</sup>/<sub>2</sub>" tall, 7<sup>1</sup>/<sub>2</sub>" front-to-back



⇐ *with optional crown*

4



### 18" Contemporary Cubby

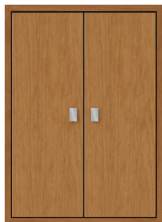
17<sup>7</sup>/<sub>8</sub>" wide

25" tall

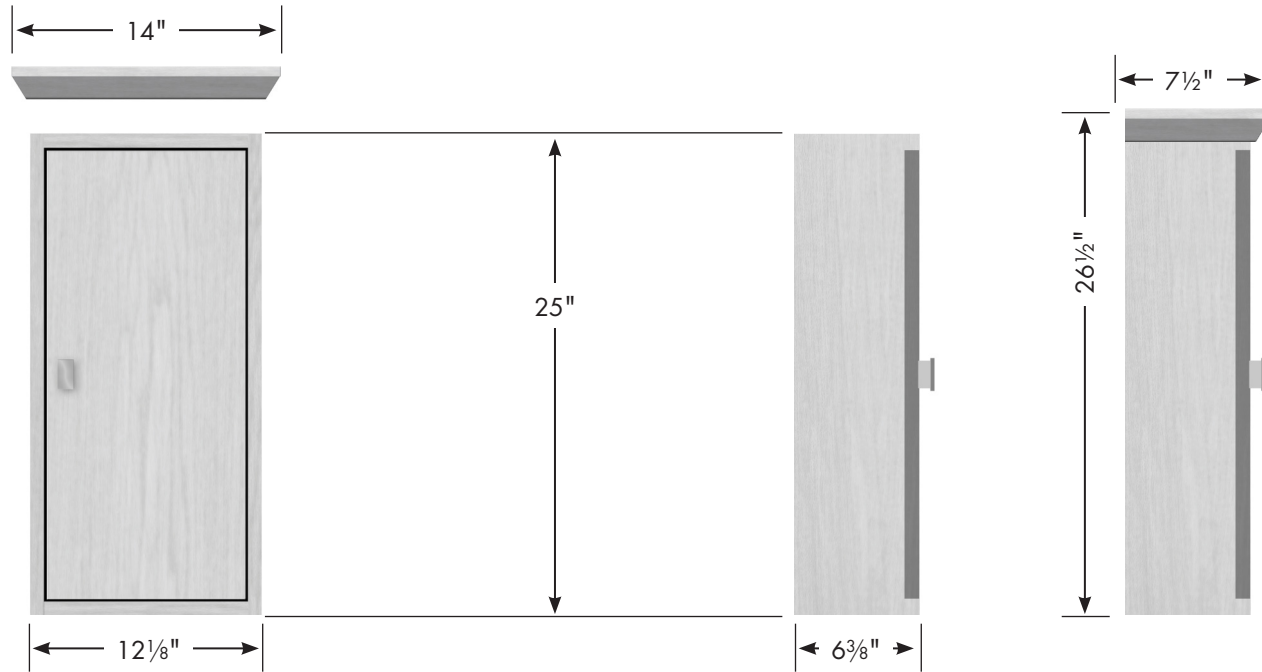
6<sup>3</sup>/<sub>8</sub>" front-to-back

*with optional crown:*

20" wide, 26<sup>1</sup>/<sub>2</sub>" tall, 7<sup>1</sup>/<sub>2</sub>" front-to-back



⇐ *with optional crown*



### 12" Contemporary Cubby

12⅛" wide

25" tall

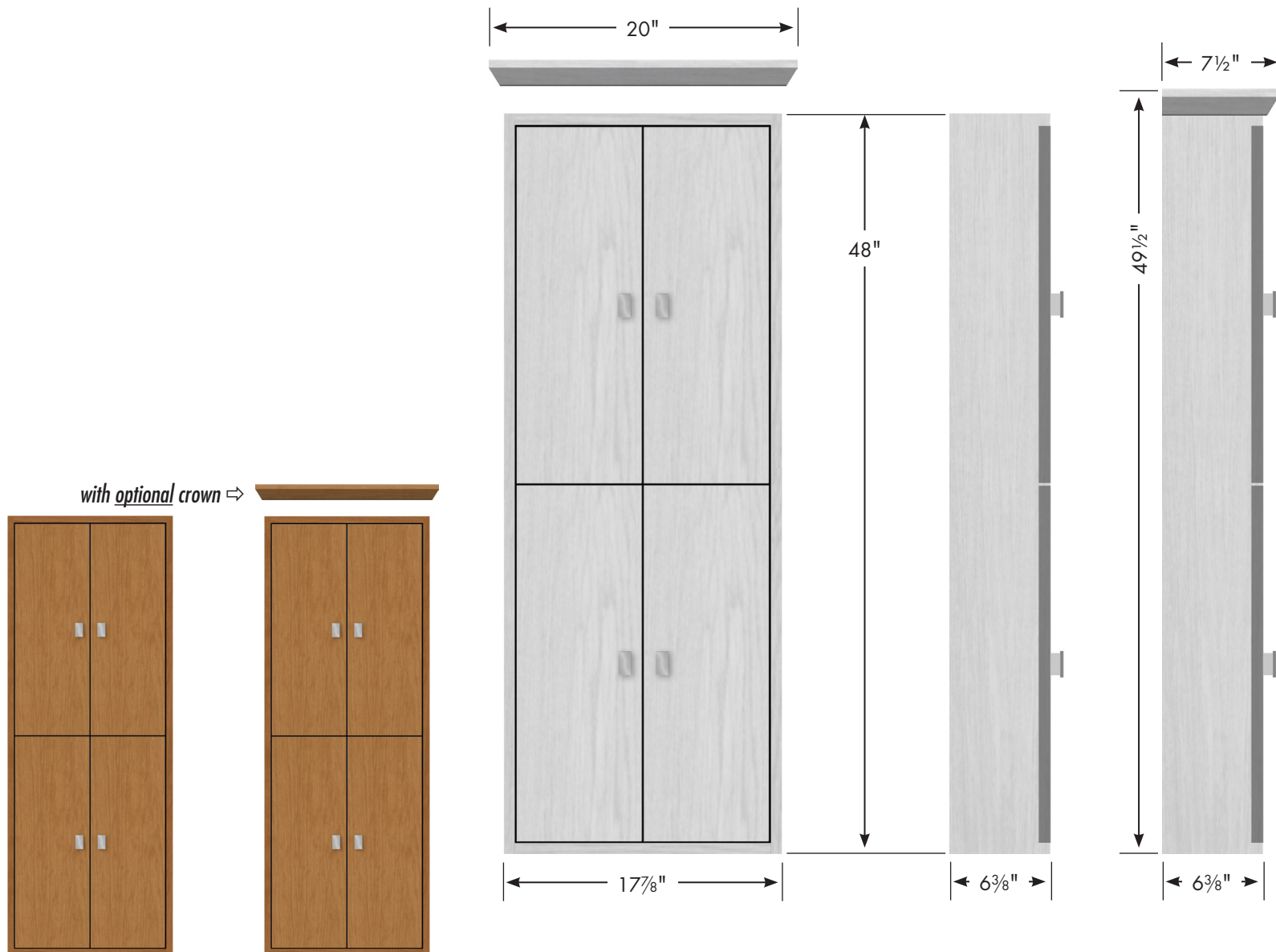
6⅜" front-to-back

*with optional crown:*

14" wide, 26½" tall, 7½" front-to-back



⇔ *with optional crown*



### 18" Contemporary Cubby TALL Version

17 7/8" wide

48" tall

6 3/8" front-to-back

*with optional crown:*

20" wide, 49 1/2" tall, 7 1/2" front-to-back