

**Features**

- Tested and certified to California Title 24 standards and JA8 2016 requirements
- Includes mirror defogging
- Dimmable LED task lighting to 1%
- Compatible with most Triac/Phase-cut dimmers
- Energy efficient LED lighting: (measurements may vary)

Kelvin	2700
CRI	90+
R9 Value	50+

**Construction**

- Anodized aluminum back frame
- Quality polished edge mirror
- Power cords installed for easy plugin installation
- Constructed for surface mounting
- Includes installation hardware

**Codes/Standards Applicable**

- Vitality Mirror is UL certified to:
- UL 962
  - CSA-C22.2, No. 12-82

**Dimensions**

Height: 40" (1016 mm)  
 Width: 24" (610 mm)  
 Depth: 1-3/4" (45 mm)  
 Net Weight: 23 - 39 lbs

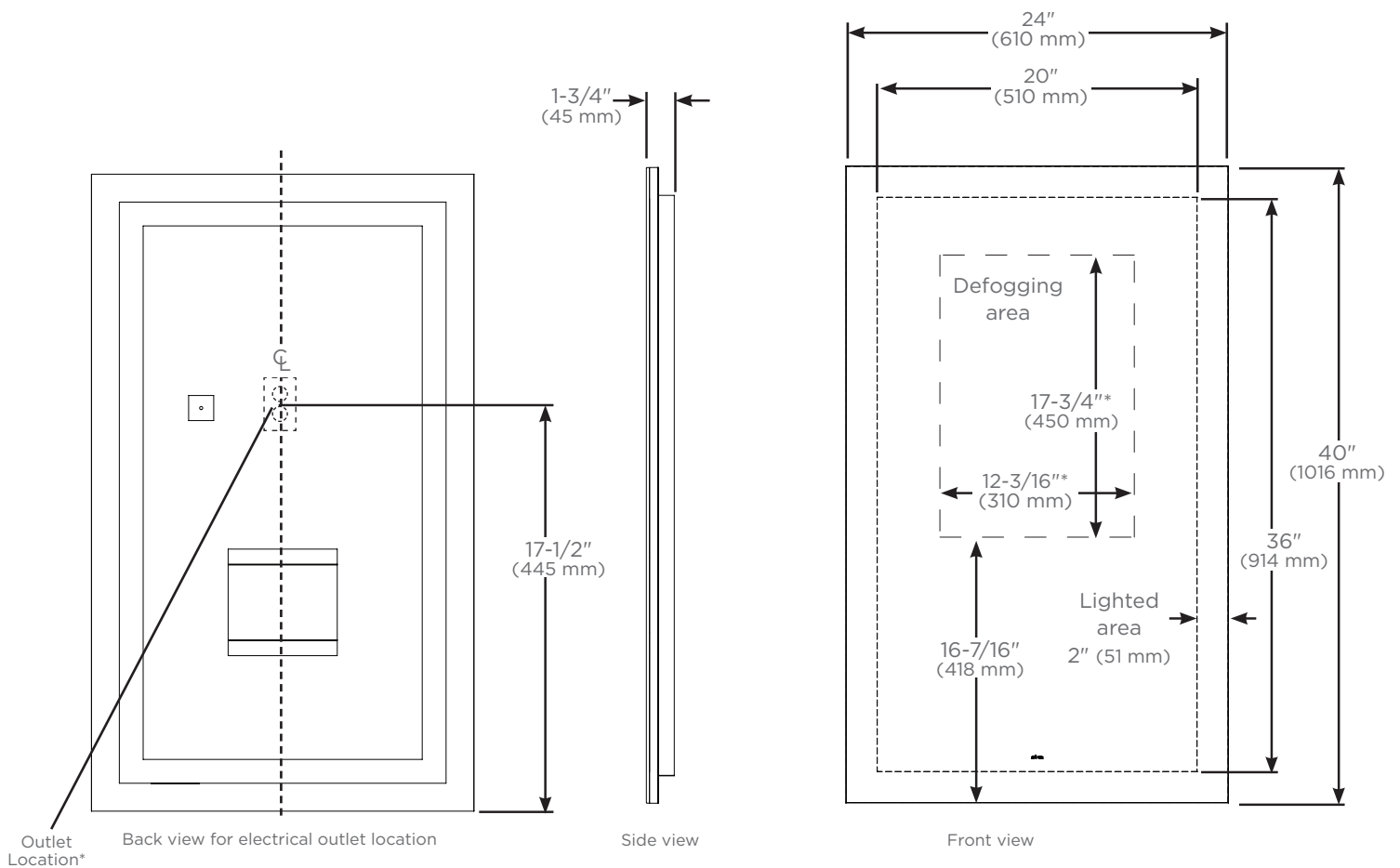
**Electrical System**

- 120 Vac 60Hz wall outlet location as shown in drawing



**Model Number Key**

Vitality	Mirror	Width	Height	Shape	Light Pattern	Edge Type	Defogger	Color Temp	Options
Y	M	24	40	R = Rectangle	P = Perimeter	FP = Flat, Polished	D = Defogger	3 = 2700K	K = Title 24 Compliant Model



\* See instructions 290-1277 for wiring and location  
 For additional information regarding Title 24 contact [customerservice@robern.com](mailto:customerservice@robern.com)