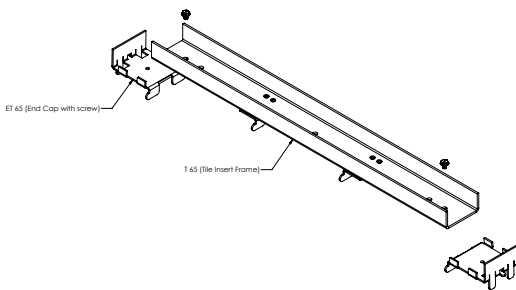
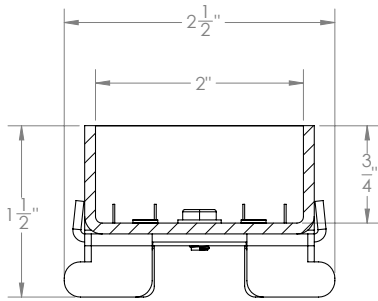


TA 65C Specifications



TA 65C:

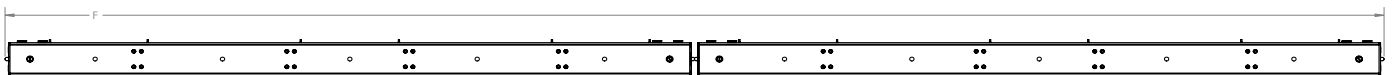
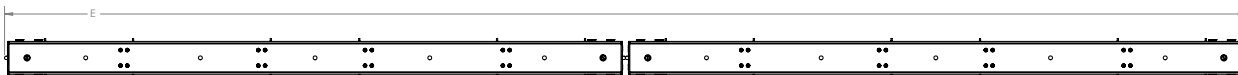
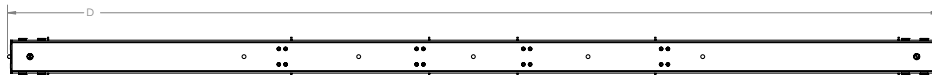
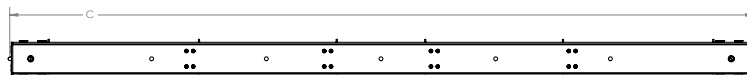
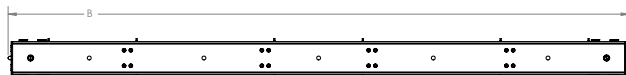
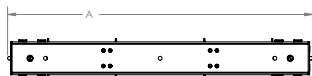
- Tile-Insert frame grate for Next Day Custom and Standard Custom
- Compatible with FC 65, FCS 65, FCB 65, FCH 65, OC 65, OCS 65, and OCH 65 channels
- 12 gauge, 304L stainless steel

Models (overall dimensions):

- TA 65C 0-36: 0 to 36-15/16" custom length (A) x 2 1/2" W x 1 1/2" H
- TA 65C 37-48: 37" to 48-15/16" custom length (B) x 2 1/2" W x 1 1/2" H
- TA 65C 49-60: 49" to 60-15/16" custom length (C) x 2 1/2" W x 1 1/2" H
- TA 65C 61-72: 61" to 72-15/16" custom length (D) x 2 1/2" W x 1 1/2" H
- TA 65C 73-84: 73" to 84-15/16" custom length (E) x 2 1/2" W x 1 1/2" H (fabricated in two sections)
- TA 65C 85-96: 85" to 96" custom length (F) x 2 1/2" W x 1 1/2" H (fabricated in two sections)

Finishes:

- Satin Stainless - SS
- Polished Stainless - PS
- Satin Bronze - SB
- Oil Rubbed Bronze - ORB
- Matte Black - BK



Infinity Drain
 145 Dixon Avenue
 Amityville, NY 11701
 Phone: 516.767.6786
 Fax: 516.740.3066
 www.infinitydrain.com



NOTE: Installer must verify all rough-in dimensions prior to installation and consult local and national codes. Conformity and compliance to local and national codes are the responsibility of the installer.