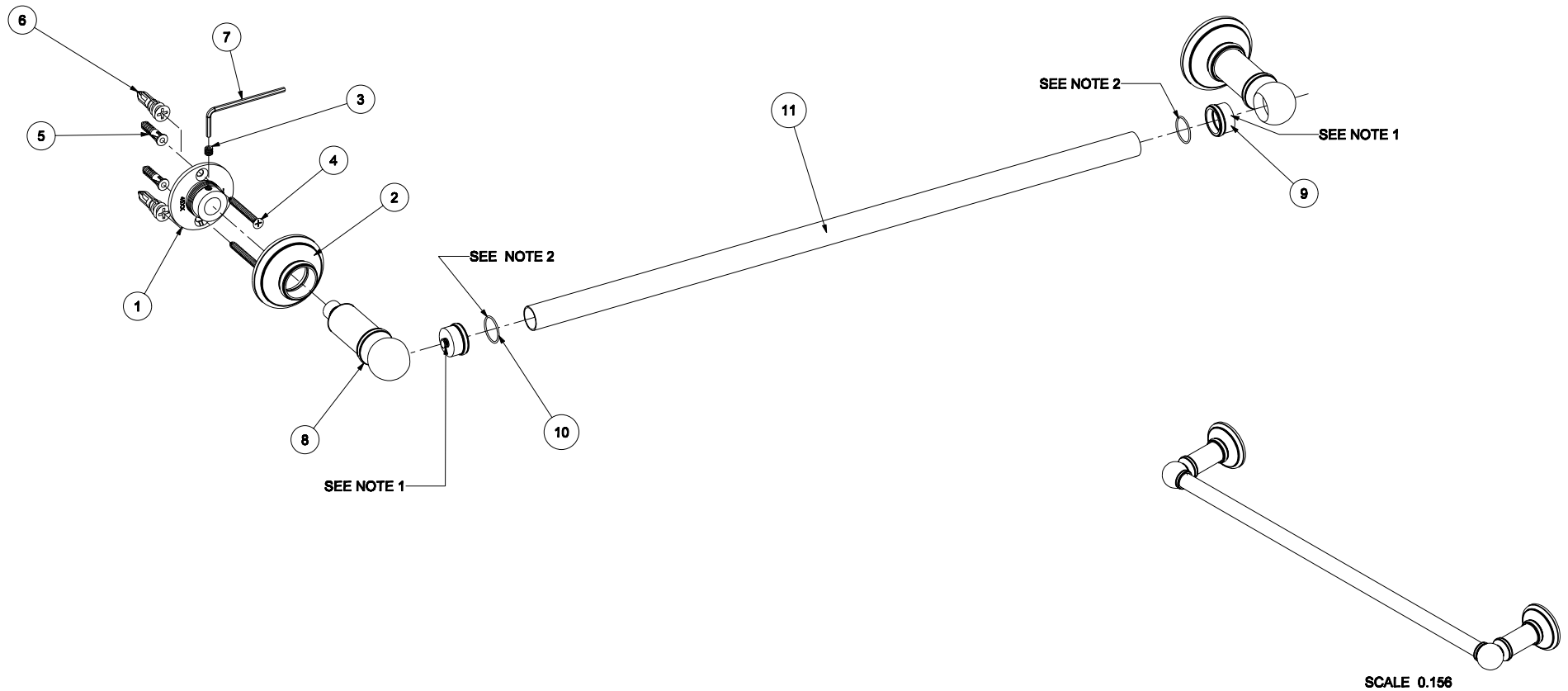


BILL OF MATERIAL

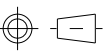
ITEM	PT/ASSY	DESCRIPTION	TYPE	QTY.	DWG.NO.
1	45XX	MOUNTING FLANGE	PART	2	45A-002
2	4500	ROSETTE	PART	2	45A-003
3	SM5-5S	M5 x5 STAINLESS STEEL SET SCREW	PART	2	-
4	8_1_5PFZ	NO.8 x 1-1/2" PHILLIPS FLAT HEAD	PART	4	-
5	GCA	NO. 8 -10 WALL ANCHOR PLASTIC	PART	4	-
6	SSPM	DRYWALL ANCHOR	PART	4	-
7	M2_5HK	2.5MM ALLOY STEEL HEX KEY	PART	1	-
8	4550P	TOWEL BAR/ TISSUE HOLDER POST	PART	2	45A-004
9	4550F	POST FLANGE	PART	2	45A-005
10	RM16-1	16mm x 1mm BUNA-N- O-RING	PART	2	-
11	4552	TOWEL BAR TUBE	PART	1	4552

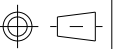
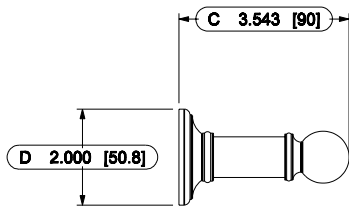
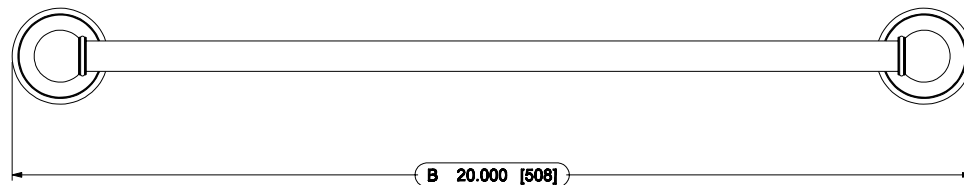
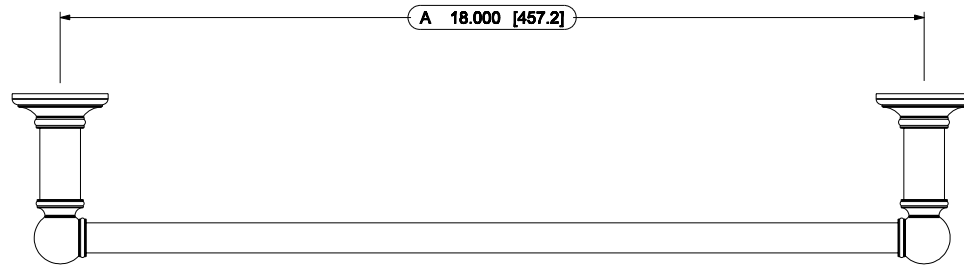


ASSEMBLY NOTES:

1. APPLY PERMANENT THREAD LOCKER (LOCTITE 262).
2. DURING FINAL ASSEMBLY: APPLY THIN LAYER OF (LOCTITE 404) AFTER O-RINGS ARE INSTALLED AND JUST BEFORE THE TOWEL BAR.

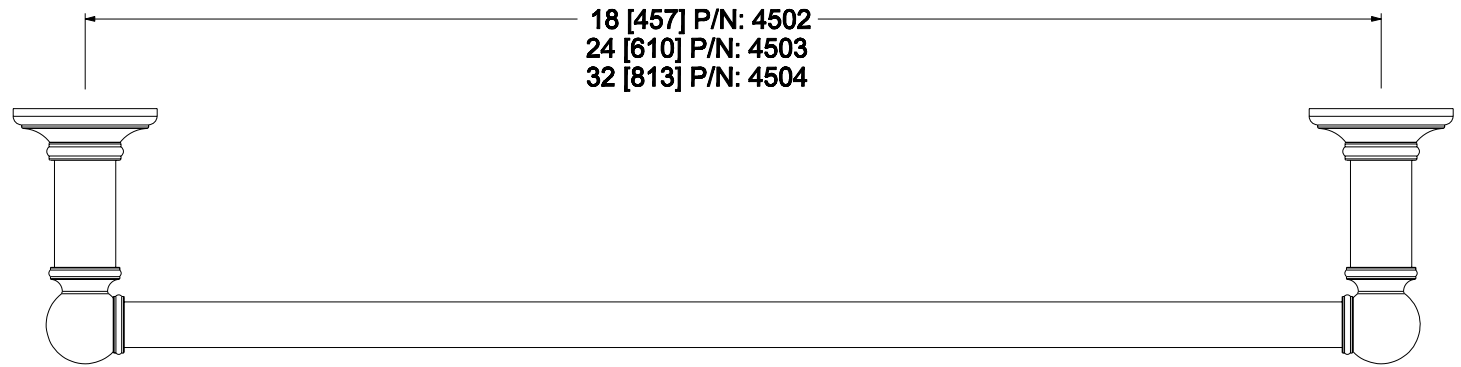
FINISHES:AGD- ANTIQUE GOLD, AS- ANTIQUE SILVER, 10B- OIL RUBBED BRONZE, 14- POLISHED NICKEL, 15- SATIN NICKEL, 26 POLISHED CHROME					GINGER
MATERIAL: STAINLESS MOUNTING HARDWARE, VARIOUS BRASSES					
PART NO.	4502	18" TOWEL BAR ASS'Y			DWG.NO.
DATE:6.28.07	REV.DATE	REV.A	SCALE 1:4	COLUMNAR	4502



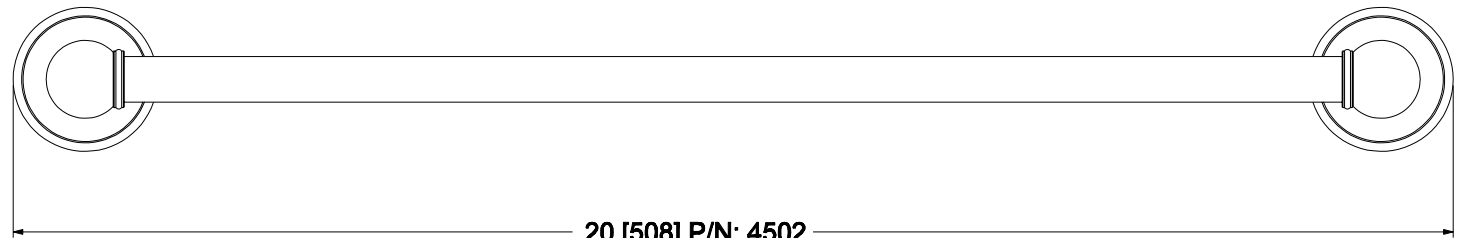
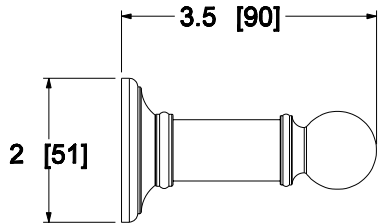


FINISHES:AGD- ANTIQUE GOLD, AS- ANTIQUE SILVER, 10B- OIL RUBBED BRONZE,14- POLISHED NICKEL, 15- SATIN NICKEL, 26 POLISHED CHROME				
MATERIAL: STAINLESS MOUNTING HARDWARE, VARIOUS BRASSES				
PART NO.	4502	18" TOWEL BAR ASS'Y		
DATE:6.28.07	REV.DATE	REV.	SCALE 1:4	COLUMNAR

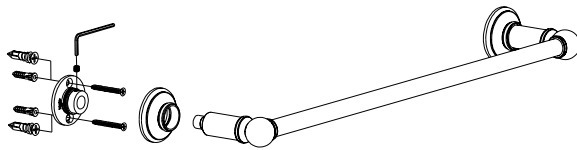
GINGER
 DWG.NO.
 4502



18 [457] P/N: 4502
 24 [610] P/N: 4503
 32 [813] P/N: 4504



20 [508] P/N: 4502
 26 [660] P/N: 4503
 34 [863] P/N: 4504



FINISHES: 0-ANTIQUE GOLD, 08-ANTIQUE SILVER, 108-OIL RUBBED BRONZE, 14-POLISHED NICKEL, 16-BATIN NICKEL, 26-POLISHED CHROME		UNIT: INCH [MM]	GINGER
MATERIAL: VARIOUS BRASSES, STAINLESS STEEL MOUNTING HARDWARE		WEIGHT: 1 LBS. 10 OZ. [748 G.]	
PART NO. 4502-4503-4504	TOWEL BARS		DWG. NO. PD-4502
DATE: 4.11.07	REV. DATE:	SCALE 3:8	

