

## Aform

### Technical data sheet



#### Washstands

##### WT.XS500.L

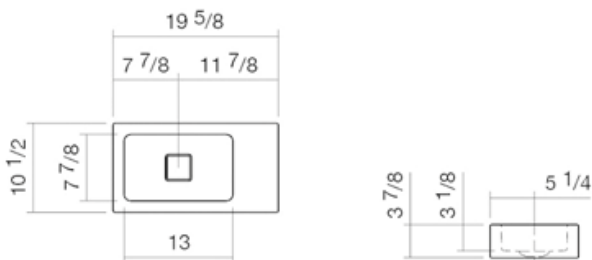
Article number: 4291000000

Design partner: busalt design

#### Features

Description	WT.XS500.L
Article number	4291000000
Standard colour	White
Special surfaces	White easy-clean (XXXX XXX 400) White antibacterial (XXXX XXX 401)
Construction	without faucet hole, without overflow
Special versions	special- or matt colour
Dimensions	19 5/8 x 10 1/2 x 3 7/8"
Material	Glazed steel
Net weight	9.92 lbs
Installation	for wall connection
Accessoires	Bottle trap SI.2, Bottle trap SI.3, Towel rail left HTH.220.L3
Faucet information	Optimum point of impact approx. 3 – 5 3/8" from rear edge of basin.

Faucets with a vertical outlet and an aerator provide the optimum flow of water onto the surface below (angle of impact: 90°).



#### Text for invitation to tender

Washstand, rectangular, 19 5/8 – 10 1/2", rectangular basin on the left, glazed inside and outside, height 3 7/8", without faucet hole and overflow, including fixing set and drain valve with white glazed cap

Brand: Alape

Model: WT.XS500.L